

University of Massachusetts Dartmouth

Residential Move In Days Plan 2021



For ALL Move In Days

All Traffic onto campus turns RIGHT.

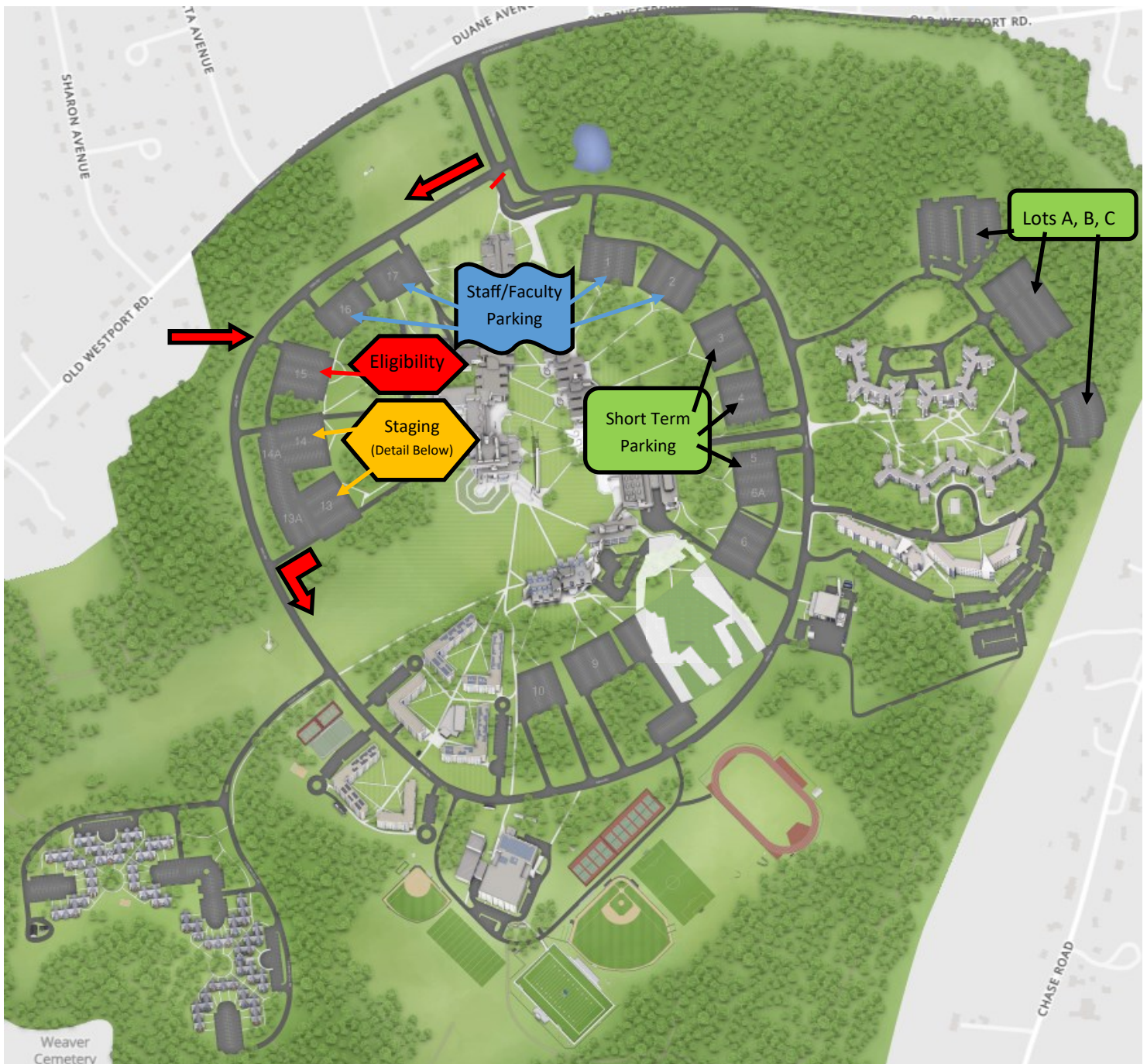
Traffic on Ring Road is one direction, counterclockwise.

Staff and Faculty park in Lots 1, 2, 16, 17

All move-in traffic pulls into Lot 15 for eligibility verification

Then to Lot 15 for staging, when released will exit Lot 13 and continue around Ring Road to their building.

Short Term (family) parking in Lots 5, 4, 3 for AFTER vehicle is unloaded

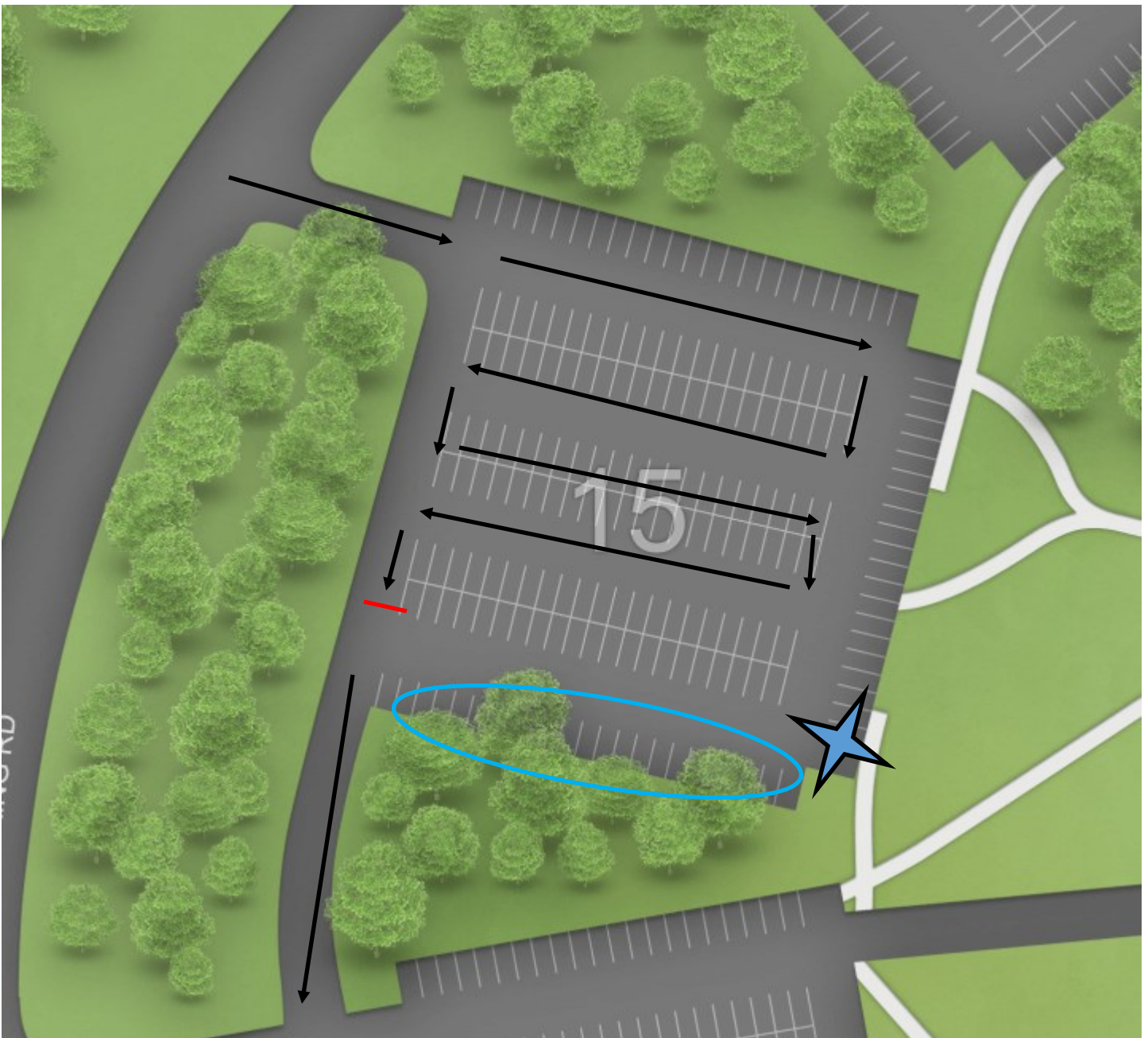


Eligibility Verification

In order to be eligible for check in, all residents must not have a Past Due Balance hold and must also be fully immunized for Covid (two weeks past final dose). Staff will be in this lot (red line) to verify eligibility to check in.

Staff will be on site in this location (blue star) to discuss further with folks who have questions or concerns about their inability to move in at that time or review further information that may update this status. These folks can leave the check in line, and park in one of the designated spaces (circled) while trying to work this out.

All students who are cleared will continue through to Lot 14.



Staging Lots

Saturday, August 28th

Gold line is Balsam

Blue line is Spruce

Monday, August 30th

Gold line is Pine Dale

Blue line is Oak Glen

Tuesday, August 31st

Gold line is Ivy in the morning, Aspen in afternoon

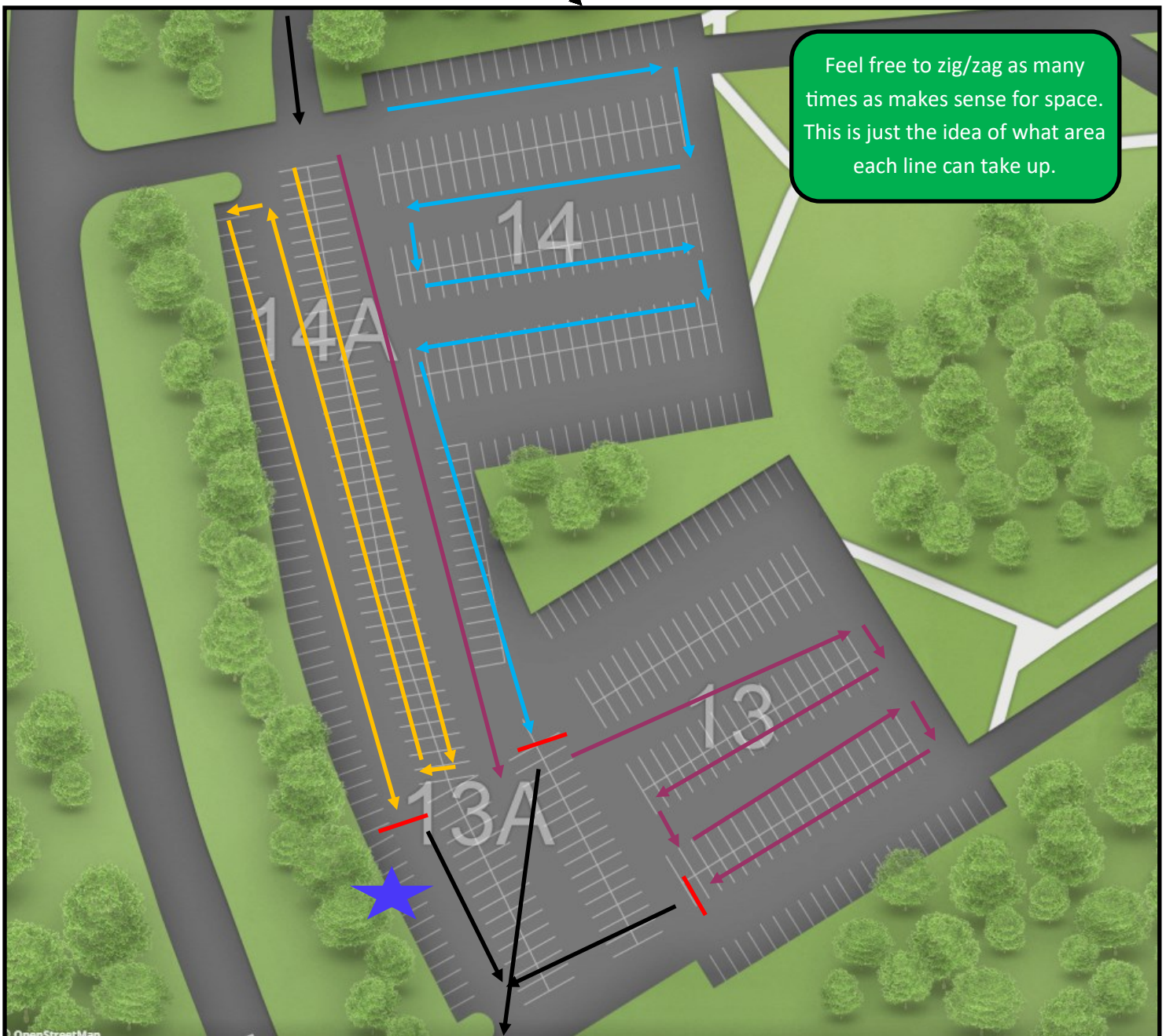
Blue line is Evergreen in the morning, Willow in afternoon

Purple line is Hickory in the morning, maybe Birch in afternoon

Hold at red lines until the building calls for more cars. 12-ish at a time?

Star: Table/tent for parking lot distribution materials

Port-a-Johns?



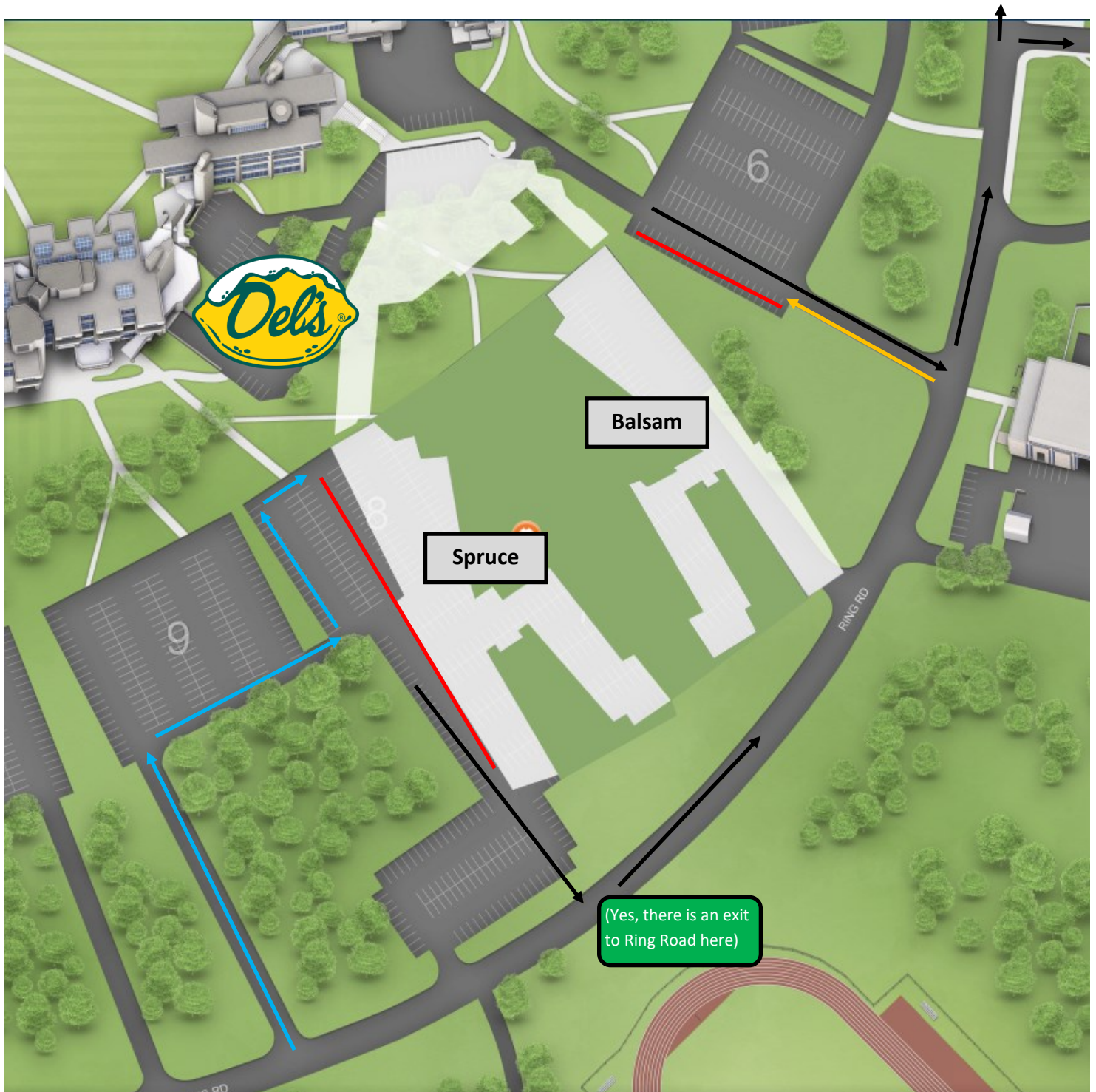
Saturday, August 28th—Balsam and Spruce Halls

Spruce traffic pulls into Lot 9 (blue line) and right next to the curb at red line.

Balsam traffic pulls into Lot 6 (gold line) and right next to curb at red line.

Once car is unloaded, exit via black lines, continue around Ring Road to parking.

Short term in 5, 4, 3. Long Term in Lots A, B, C



Monday, August 30th—Oak Glen and Pine Dale Halls

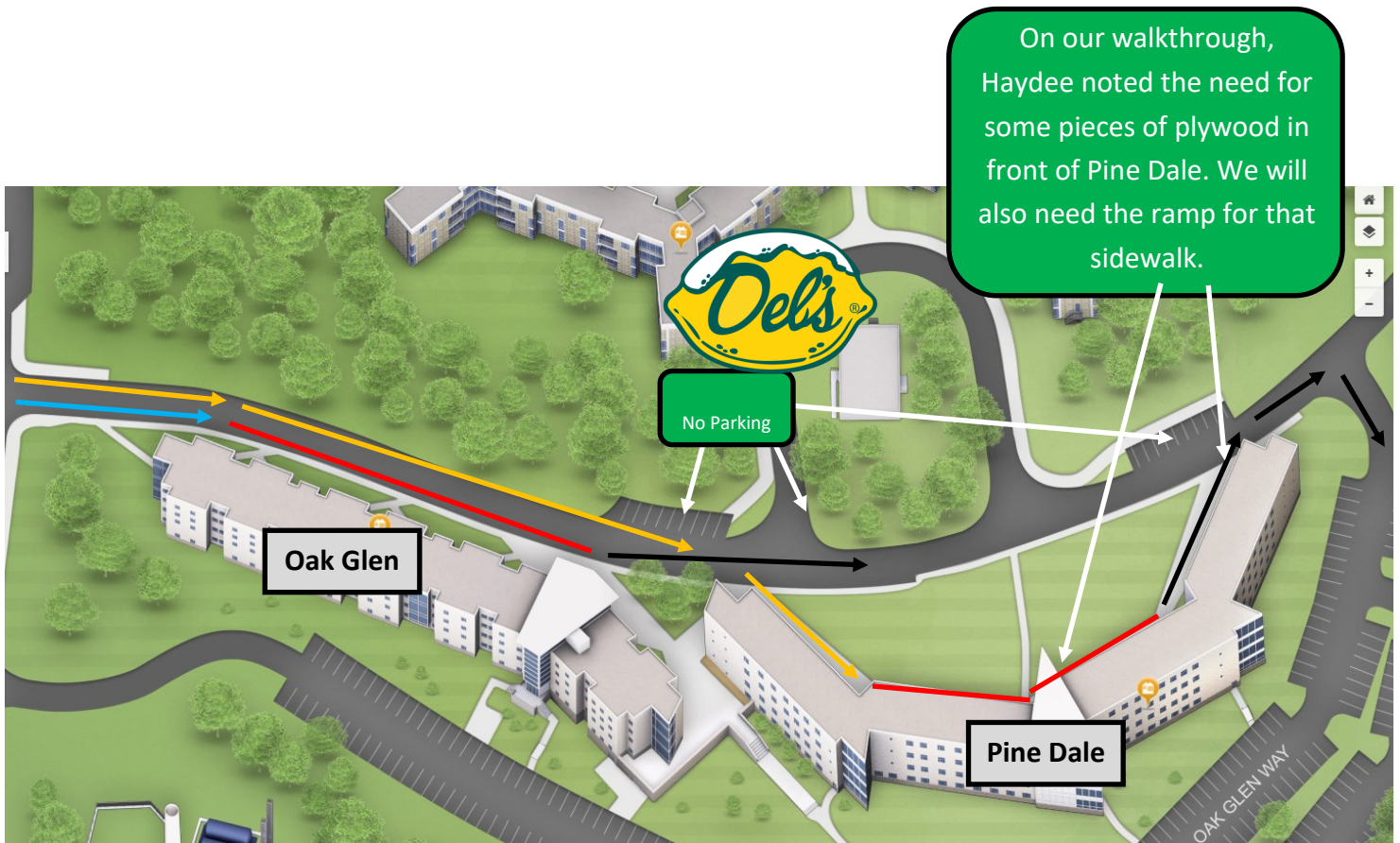
This roadway is divided in half.

Pine Dale traffic (gold line) pulls onto the road in left lane, then pulls onto sidewalk in front of Pine Dale. Unload at red lines.

Oak Glen traffic (blue line) is in right lane, pulled up to the sidewalk, unload at red lines.

Once car is unloaded, exit via black lines, parking in back of buildings.

Short term in 5, 4, 3. Overflow long term in Lots A, B, C



Tuesday, August 31st—Woodland Apartments

Ivy (morning) and Aspen (afternoon) traffic turns in at gold line, unload at red lines.

Evergreen (morning) and Willow (afternoon) traffic turns in at blue line, unload at red lines.

Hickory (morning) and Birch (afternoon, maybe) traffic turns in at purple line, unload at red lines.

Once car is unloaded, exit via black lines, parking in Lots 10, 9.

Short term/overflow in 5, 4, 3.

